

# Canonium Learning Trust



## Health, Safety, Premises Management and Wellbeing Policy

Adopted: Autumn 2021

Next review: Autumn 2022

<b>1</b>	<b>Statement of Intent by Chair of the Board of Directors</b>	
<b>2</b>	<b>Responsibilities</b>	
2.1	Board of Directors	
2.2	Teaching & Learning Council	
2.3	CEO	
2.4	Headteacher/Head of School	
2.5	Site Manager	
2.6	Operational Director and Academy Health and Safety Co-ordinator	
2.7	All managers and supervisors	
2.8	All employees	
2.9	School Visits	
2.10	Contractors and Visitors	
<b>3</b>	<b>Competent Health and Safety Advice</b>	
<b>4</b>	<b>Occupational Health</b>	
4.1	Occupational Health Advice	
4.2	Counselling	
4.3	Wellbeing	
<b>5</b>	<b>Educational Visits</b>	
<b>6</b>	<b>Catering</b>	
<b>7</b>	<b>Health Protection</b>	
<b>8</b>	<b>Property Consultants</b>	
<b>9</b>	<b>Management of Radioactive Sources</b>	
<b>10</b>	<b>Health and Safety Arrangements</b>	
10.1	General Arrangements	
10.2	Local Arrangements within the School	
10.3	Health and Safety Standards (Status)	
10.4	Health and Safety Risk Assessments	
<b>11</b>	<b>Health and Safety Competence and Capability</b>	
<b>12</b>	<b>Communication</b>	
<b>13</b>	<b>Health and Safety Consultation</b>	
<b>14</b>	<b>Health and Safety Monitoring and Auditing</b>	
<b>15</b>	<b>Health and Safety Performance Reporting and Review</b>	
<b>16</b>	<b>Consequences of Non Compliance with the Schools Health and Safety Policies and Standards</b>	
<b>17</b>	<b>Review and Revision</b>	
	<b><u>Appendices</u></b>	
	<b>Appendix 1: Health and Safety Local Arrangements Notice</b>	
	<b>Appendix 2: Getting Help on Health and Safety</b>	
	<b>Appendix 3: How to Raise a Health and Safety Concern</b>	
	<b>Appendix 4: Inspection and testing Schedule</b>	

## 1 Statement of Intent

The Board of Directors consider the successful management of health, safety, premises management and wellbeing to be a key objective and an integral part of the Trust. The Trust is committed to reducing and preventing workplace injuries, ill health and unnecessary losses and liabilities so far as is reasonable practicable.

The Canonium Learning Trust is committed to:

- Managing its academies buildings and equipment in an efficient, legally compliant way.
- Inspecting and testing academy buildings and equipment regularly, taking into account statutory requirements and best practice recommendations
- Promoting the safety and wellbeing of our staff, pupils, parents and visitors through effective maintenance of academy buildings and equipment in accordance with the [Health and Safety at Work etc. Act 1974](#)
- Compliance with the requirements of the [Education \(Independent School Standards\) \(England\) Regulations 2010](#), as [amended](#)
- Compliance with the requirements of the [statutory framework for the EYFS](#)
- Compliance with all applicable legislative and regulatory requirements.
- Providing a robust, systematic and sustainable health and safety management system.
- Ensuring health and safety roles and responsibilities are understood and communicated throughout the school.
- Identifying our health and safety risks and ensuring provision of suitable and sufficient risk control measures.
- Providing appropriate and relevant information, instruction, training and supervision.
- Consulting with staff on health and safety issues.
- Providing a healthy and safe workplace.
- Providing appropriate emergency arrangements, equipment and facilities.
- Continual improvement in all areas of health and safety management.

The Trust expect all employees, contractors and visitors to take reasonable care for their own health and safety and that of others who may be affected by their actions or omissions.

The Board of Directors accepts their health and safety responsibilities and are committed to developing a culture that supports the effective management of health and safety at all levels.

The Board of Directors will provide the necessary physical and financial resources, provide active leadership and obtain any necessary expert advice in order to demonstrate our commitment to and support for the health and safety policy.

### Chair of the Board of Directors

This policy will be reviewed annually.

## 2 Responsibilities

### 2.1 Board of Directors

The Board of Directors, as the employer is responsible for health, safety, premises management and wellbeing and therefore ensuring compliance with relevant legislation. This includes legal duties as controllers of the premises.

Board of Directors' duties include:

- Taking reasonable steps, to make sure that the school buildings, grounds, equipment and materials are safe and do not put the health, safety and welfare of persons at risk whilst they are on the premises.
- Ensuring that appropriate arrangements are in place to comply with statutory requirements.
- Ensuring that statutory requirements are taken into account in determining the allocation of resources.
- Ensuring that the policies and procedures for recruitment, induction, staff development, performance management and capability used by the school include health and safety competence and capability.
- Ensuring health and safety is part of the performance management of the CEO.
- Ensuring that the CEO has an appropriate workload, in support of a reasonable work/life balance, having regard to their health and welfare.
- Having regard to their own competence and capability before offering advice or undertaking work that may affect the health and safety of school activities.
- Ensuring that anyone appointed to undertake construction and maintenance work on the school premises is competent to do so and that any construction work is carried out in accordance with the Construction, Design and Management (CDM) Regulations.
- Ensuring that a property consultant is used to assist with the appointment of a competent CDM co-ordinator before any notifiable construction or demolition work is undertaken on the site. (NB: This is to ensure construction work is carried out in accordance with the requirements of the Construction, Design and Management (CDM) Regulations. Notifiable projects are those likely to last more than 30 working days **and** have more than 20 workers working at the same time at any point on the project **or** exceed 500 person days).
- Taking an active part in monitoring health and safety standards in the school, by requiring the CEO to provide regular reports on health and safety performance to the Board of Directors. Such reports should provide information on action taken in response to outcomes of:
  - School health and safety inspections, monitoring checks and incident investigations.
  - Health and safety investigations and inspections carried out by enforcing bodies (e.g. HSE, Fire and Rescue Service, Environmental Health). Other serious incidents investigated by the CEO, Headteacher/Head of School or other member of staff.
  - Any surveys carried out by the school, which provides data that relates to employee health, safety and wellbeing (e.g. Outcomes from Education Support Partnership Programme if used).

## **2.2 Teaching & Learning Council Members**

Teaching and Learning Members' duties include:

- Ensuring that statutory requirements are taken into account in determining the allocation of resources.
- Ensuring that the Headteacher/Head of School has an appropriate workload, in support of a reasonable work/life balance, having regard to their health and welfare.
- Having regard to their own competence and capability before offering advice or undertaking work that may affect the health and safety of school activities.
- Appointing a Governor who understands the educational visits system and who will agree the higher risk visits (e.g. overseas, adventurous or residential).

## **2.2 CEO**

CEO's responsibilities include, ensuring:

- Contractors have the necessary qualifications to carry out the specified work
- Compliance with the Construction (Design and Management) Regulations 2015 on letting of a construction project;
- Compliance with the Equality Act 2010 when making changes or alterations to a building or the external environment;
- As part of the records of completed works, the academy includes the dates when the works were undertaken and the details of the individual or company who completed them, along with their qualifications/certifications and/or experience.
- Health and safety is part of the performance management of the Headteacher/Head of School.

## **2.3 Headteacher/Head of School**

Headteacher/Head of School's responsibilities include:

- Ensuring there are appropriate arrangements for implementing the School's Health, Safety and Wellbeing Policy.
- Ensuring that the Policy and arrangements are effectively communicated.
- Ensuring correct and up-to-date information is displayed on all notices.
- Ensuring systems are in place for consultation with all employees and that Trade Union appointed safety representatives can carry out their functions.
- Demonstrating health and safety leadership by ensuring health and safety is given equal importance to service delivery.
- Ensuring there are appropriate arrangements in place for co-operation and co-ordination with other users of the school site and that, where necessary joint health and safety arrangements are recorded and agreed.
- Ensuring appropriate arrangements are in place for communication of health and safety to all employees, agency workers, contractors, visitors, volunteers and pupils.

- Ensuring that all employees are competent and have the capability to carry out their role/function.
- Ensuring records of health and safety training are maintained by the School.
- Ensuring that health and safety standards accessed via the schools Infolink are made available to relevant employees.
- Ensuring the School's health and safety standards (available via the schools Infolink) are implemented.
- Ensuring there are arrangements in place for managing risks arising from the school's activities or premises, which are not covered by standards available on the Schools Infolink.
- Ensuring that risk assessments relating to hazards to which directly managed employees are exposed are carried out, recorded and control measures implemented.
- Ensuring relevant risk assessments are conducted and reported to the Teaching & Learning Council, as required.
- Ensuring all requirements and recommendations highlighted in inspection reports and certificates are reviewed and acted on as necessary.
- Ensuring that managers who they directly line manage carry out their health and safety responsibilities.
- Ensuring systems are in place for monitoring and reviewing health and safety in the school and any actions arising from this are implemented.
- Ensuring there is system in place for reporting and investigating accidents / incidents and that all employees are aware of it.
- Regularly (at least annually) reporting school health and safety performance to the CEO.
- Ensuring there are arrangements in place for the management of the premises on a day to day basis.
- Ensuring premises management tasks are delegated to a suitably competent site manager or co-ordinator, or a competent property consultant.
- Ensuring that if they are not the Schools named Educational Visits Co-ordinator, they appoint a member of the Schools Senior Management Team to undertake the role (and ensure they given training and time to undertake the role).

### **2.3 Operational Director and Academy Health and Safety Co-ordinator**

The CEO can appoint an Operational Director to oversee Health and Safety in a number of schools. The Operational Director in consultation with Headteacher/Head of Schools, may if appropriate, appoint a senior member of staff to co-ordinate and monitor the implementation of the health, safety, premises management and wellbeing policy within an individual academy. The safety co-ordinator must be given sufficient time and resources to carry out their role. Their identity and role should be clearly communicated to all school employees.

Operational Director will ensure that:

- Scheduled inspections and tests, for each academy in the trust, are completed annually (appendix 4).
- Accurate records and details of all statutory tests, which are undertaken are maintained. This includes relevant paperwork and certificates.

**Below are the *duties* which may be delegated to another member of staff. However, the *responsibility* remains with the Operational Director and Headteacher/Head of School.**

Operational Director and/or Health & Safety Co-ordinator will:

- Establish arrangements for the effective co-ordination of health and safety throughout the School.
- Support the Headteacher/Head of School in co-ordinating the development, review and revision of the School's health and safety standards.
- Set up arrangements for consulting with employees on health and safety (e.g. through health, safety and wellbeing committee meetings or team meetings).
- Set up arrangements for the effective communication of health, safety and wellbeing information relevant to the school.
- Ensure health and safety concerns raised by employees are brought to the attention of the appropriate senior manager.
- Ensure that the Headteacher/Head of School/school senior management team is kept informed of health and safety issues by including them on the agenda of management group meetings.
- Co-ordinate the identification of health and safety training and development needs to meet the requirements of the School's Policies and Standards.
- Ensure records of health and safety training and development undertaken by employees is kept on record in the school.
- Support the establishment of adequate arrangements for:
  - First aid;
  - Fire and emergency evacuation;
  - Reporting of health and safety incidents, hazards and concerns;
- Oversee the management of premises related health and safety risks to employees and other premises users or visitors.
- Co-ordinate and ensure compliance with premises related standards and assessments.
- Co-ordinate arrangements for monitoring of health and safety standards within the school.

#### **2.4 SITE MANAGER will ensure that they:**

- Inspect and maintain the school premises.
- Conduct repairs and general maintenance.
- Are the first point of contact for any issues with the premises.
- Conduct and keep a record of risk assessments and incident logs related to the school premises.
- Liaise with the Headteacher/Head of School/Head of School about what actions need to be taken to keep the school premises safe.
- Pass on records and details of all statutory tests, which are undertaken, to the Operational Director. *This includes relevant paperwork and certificates.*

**All Canonium Learning Trust Academies follow the Essex Health, Safety and Wellbeing Policy as below:**

## **2.4 All managers and supervisors**

All employees with management and supervisory responsibilities are responsible for the implementation of the Health, Safety and Wellbeing Policy in their area of control. As a general rule the direct responsibility of managers for health and safety is determined by the extent to which they have authority to take action. That is if they have the authority to make a general decision about some aspects of the work, they are responsible for the health and safety implications of that decision.

Their responsibilities include:

- Ensuring the Health, Safety and Wellbeing Policy is implemented in their area of responsibility.
- Ensuring managers under their control carry out their health and safety responsibilities.
- Identifying opportunities to improve the health, safety and wellbeing within the School, and promoting risk awareness and the development of safe behaviours.
- Ensuring all relevant health and safety information is communicated effectively to the correct employees and take account of their views.
- Ensuring the health and safety competence and capability of employees under their control (identifying any training needs as part of performance management).
- Ensuring relevant health and safety standards and risk assessments are implemented in their area of control.
- Ensuring, in their area of control, risk assessments are carried out, recorded and the control measures implemented.
- Undertaking risk assessments relating to hazards to which directly managed staff are exposed (this will include stress risk assessments).
- Reviewing the effectiveness of health and safety standards at controlling risks and feeding back areas of concern to their line manager, Headteacher/Head of School or Governing Body.
- Ensuring health and safety issues identified via risk assessments or monitoring activities that cannot be addressed are raised with their line manager.
- Ensuring health and safety monitoring is undertaken in their area of control, in accordance with the School's requirements.

## **2.5 All employees**

All employees are responsible for:

- Looking after their own safety, and the safety of others, affected by their work.
- Co-operating with the School, by following safe working practices and carrying out their health and safety responsibilities as detailed in the School's policies, risk assessments and health and safety standards.
- Reporting to their line manager any hazards they identify and any inadequacies in health and safety procedures.
- Taking part in any health and safety training and development identified as necessary by the Headteacher/Head of School or their Line Manager.
- Using work equipment provided correctly, in accordance with instructions or training.
- Ensuring that if they organise projects or activities involving pupils or other non employees, risks are assessed as part of the planning stage and control measures implemented.

- Reporting health and safety incidents, in accordance with the School's health and safety Incident Reporting Procedure.

And, with respect to Safety Education:

- All employees are responsible for contributing to the safety education of pupils through the formal and informal curriculum.
- All teachers and support staff are responsible for the effective supervision and safety of pupils under their care. This includes ensuring that pupils follow health and safety instructions.

## **2.6 School Visits**

The School undertakes educational visits and has appointed an Educational Visits Co-ordinator (EVC) who has:

- sufficient and relevant experience in running visits;
- the competence to train and monitor others; and
- the authority to agree or not to agree to visits.

Where the school has any part in organising events, trips or activities beyond the school gate it recognises that it has a responsibility. The school's pastoral responsibilities cannot be delegated to other external providers.

The School has developed a policy on visits beyond the school gate which includes:

- Emergency, accident and critical incidents planning.
- Supervision and staffing including competence, safeguarding and training. All those involved in any supervision for the school are subject to this policy.
- The visits system, including the school approach to planning, informing, signing off and supporting visits.

Educational Visits Professional Advice:

- The School has access to specialist advice on Educational Visits from the ECC Educational Visits Team (contact details in Appendix 2).
- This includes access to advice via phone and e-mail, access to the Educational Visits Website (EVOLVE) and access to the online risk assessment forms.

The School EVC will:

- Ensure they have attended EVC Training (and refresher training at least every 3 years);
- Ensure that establishment managers, visit leaders, assisting staff, voluntary helpers and all staff involved in LOtC, off-site activities and visits have had access to training / instruction at an appropriate level to ensure that the School's guidance and establishment procedures are properly understood and followed. This will involve training on visit planning, group management, use of external providers, pre-visits risk management and safeguarding;
- Organise the training of Visit Leaders and Assistant Leaders (including voluntary helpers);



- Ensure that Leaders and Assistant Leaders are competent to carry out the tasks they are assigned;
- Ensure that activities and visits are led by competent and confident leaders. The Visit Leader needs to be both accountable and competent. Being accountable implies being an employee and thus part of a chain of specified roles and responsibilities. Being competent requires that the leader can demonstrate the ability to operate to current standards of recognised good practice;
- Manage training of all those connected with visits, including having a deputy trained to take over as EVC in case of absence;
- Understand where visits can be signed off by the EVC on “everyday risk” and when further advice is necessary;
- Ensure they have an understanding of how Learning Outside the Classroom (LOtC), off-site activities and visits can support a wide range of outcomes for children and young people, and raise achievement;
- Ensure that LOtC, off-site activities and visits meet guidance requirements;
- Ensure the ‘Educational Visits Statement’ available from the EVOLVE website is implemented;
- Ensure that a school specific visits policy has been developed using the template / guidance on EVOLVE and that the policy has been uploaded on the Establishment section on EVOLVE;
- Ensure that DBS checks are in place as required.
- Ensure that the establishment policy provides sufficient guidance to Visit Leaders about information for parents and parental consent;
- Support the Headteacher/Head of School and Governors as required with information, visit approvals and other decisions;
- Check that there is a 24/7 emergency contact(s) with the base for each and every visit and that emergency arrangements are in place;
- Ensure they keep up to date with EVC update processes through EVOLVE and EVC Revalidation courses as recommended or required.
- Ensure that there is an establishment procedure for recording “incidents / accidents / near misses”, including any resulting learning points and action;
- Ensure that where the accompanying staff includes someone with a close relationship to a group member, there are adequate safeguards to ensure that this will not compromise group management;
- Ensure that medical and first aid issues are addressed;
- Ensure that emergency arrangements are in place including emergency contact access to all relevant records, including medical and next of kin information for all members of the party, including staff;
- Undertake monitoring of Visit Leader planning and sample monitoring of visits;
- Ensure that individual activities and visits are reviewed and evaluated and that this process includes reporting of accidents and incidents, (including under the Reporting Injuries, Diseases and Dangerous Occurrences Regulations [RIDDOR] where necessary).
- Ensure that policies and procedures are reviewed on a regular basis. A review should follow any serious incident or systems failure. Risk management documentation must be updated if necessary.
- Submit electronically within the timeframes set out by the Educational Visits Team, residential, overseas and adventurous visits to the County Educational Visits Adviser for comment providing sufficient information on the risk management of the visit. (only if the School accessing the Councils EVC Advisory Service)
- Understand when it is necessary to seek clearance for some visits from the Governing Body. This is likely to be when a visit is first proposed, before a

financial commitment is made and for specific types of visits e.g. overseas expeditions.

- Keep records of individual visit plans (a legal document), as well as reference material for the school, in addition to keeping records e.g. reports of health and safety incidents (the school has access to and uses EVOLVE to keep records).

## **2.7 Contractors and Visitors**

- Visitors to the School, including contractors, clients, service providers and members of the public must comply with the Schools health and safety procedures and requirements.
- All contractors and visitors must be made aware of the site specific arrangements and emergency procedures and are the responsibility of the member of staff being visited.

## **3. Competent Health and Safety Advice**

The school purchases the Essex County Council Health and Safety Service as providers of competent health and safety advice, to assist the school with discharging its responsibilities.

The ECC Health & Safety Service includes:

- Access to standards, generic risk assessments and guidance through the Health & Safety pages of the Schools Infolink. (These standards are based on legislation, industry standards and best practice and produced by competent health & safety advisers).
- Access to a telephone and e-mail support desk for queries.
- Further support, such as audits and site visits charged at an hourly rate.

## **4. Occupational Health**

### **4.1 Occupational Health Advice**

The School has access to / contracted with Council's Occupational Health Service in relation to competent occupational health advice.

The service includes:

- Pre-employment health screening and advice on reasonable adjustments to enable employment of applicants with disabilities and health conditions;
- Support in the prevention of work related absence through advising on health related risk assessment;
- Statutory health surveillance (for exposure to noise, vibration, hazardous dusts and substances);
- Advice at the early stages of occupational ill health, thereby reducing the risk of an absence becoming long term or recurring;
- Support where employees are sick, examination and advice on whether return to work is appropriate and, if so, what adjustments may be needed;
- Advice for employees and possible recommendation for further specialist advice/treatment;

- A second opinion on a GP report and liaising with the GP on any differences of opinion;
- Assessing the employee's eligibility for ill health retirement or disability benefits.

*Note: The Council's Occupational Health Service is recommended, as they have experience on advising educational environments. Further details can be found on the occupational health pages of the Schools Infolink or by telephoning 0333 013 9804.*

## **4.2 Counselling**

The School has access to the Council's Occupational Health Service and as part of this has ensured that staff also have access to the counselling service

Counselling Service: Telephone 0333 013 3267 / E-mail [counselling@essex.gov.uk](mailto:counselling@essex.gov.uk)

Further information on Schools Infolink – Staff Support / Occupational Health

## **4.3 Wellbeing**

The School undertake occupational stress risk assessments through use of the guidance and forms available on the Occupational Stress pages of the Schools Infolink. (Health and Safety Area)

## **5. Educational Visits**

The School has bought in to Essex County Council Educational Visits Service. This gives the School professional advice on health and safety standards for all educational visits, including Adventurous, Residential and Overseas visits involving children and young people.

ECC Educational Visits Service has adopted the OEAP National Guidance for the Management of outdoor learning, off-site visits and Learning Outside the Classroom. See [www.oeapng.info](http://www.oeapng.info) – documents 3.4g Headteacher/Head of School / Managers and 3.3b Check List.

As part of the subscription to the Educational Visits Support Service the School has access to the [EVOLVE](#) online submission system and associated resources.

Educational Visits Support Service: [www.essexvisits.org.uk](http://www.essexvisits.org.uk) / Tel: 01245 221022 / E-mail: [educational.visits@eesforschools.org](mailto:educational.visits@eesforschools.org)

## **6 Catering**

The School contracts out the delivery of its catering. The school recognises it retains a duty of care to its pupils and therefore regularly undertakes monitoring and quality assurance checks regarding the provision of the service (including the management of allergens).

## **7 Health Protection**

The Essex Health Protection Team (HPT), which is part of Public Health England (PHE), provides advice on communicable diseases and infection control in schools. In the first instance, schools should refer to Essex HPT's guidance – 'Communicable Diseases in Schools / Nurseries and Centres for under 5's' or PHE general guidance 'Infection control in schools and other childcare settings'. (These documents are available on the health & safety pages of the Schools Infolink).

Further assistance may be available from the School nurse at a local NHS clinic or through contact with HPT directly.

Essex Health Protection Team: [essexhpt@phe.gov.uk](mailto:essexhpt@phe.gov.uk) / 0345 155 0069

## **8 Property Consultants**

Where major building or maintenance / improvement works are being carried out the School will appoint a property consultant. Major work is defined as notifiable under the Construction Design and Management Regulations. Notifiable projects are those likely to last more than 30 working days **and** have more than 20 workers working at the same time at any point on the project **or** exceed 500 person days.

The School also buys in to a property consultant to provide professional advice in connection with all maintenance and general building work. The consultant provides advice on:

- Management of day-to-day repairs.
- Statutory and best practice for testing and inspection of services.
- Prioritisation of projects.
- Health and Safety issues relating to buildings and construction work.
- Regulations, standards and statutory approvals.

The School also has access to standards on general property issues and compliance through the Health & Safety pages and the Infrastructure delivery pages on the Schools Infolink.

The School also has access to standards on general property issues and compliance through the Health & Safety pages and the Infrastructure delivery pages on the Schools Infolink.

Where major building or maintenance / improvement works are being carried out, the School appoints a property consultant.

## **9 Management of Radioactive Sources**

NONE

## **10 Health and Safety Arrangements**

### **10.1 General Arrangements**

The detailed arrangements for implementing this Policy are contained within health and safety standards, generic risk assessments and guidance on the health and safety pages of the Schools Infolink. The standards are on a secure part of the Infolink which the school has access to as it buys into the ECC Corporate Health & Safety Service.

School staff who are not able to access the health and safety pages on the Infolink with their login should contact the School's Health & Safety co-ordinator to obtain any guidance they need or to arrange for access to the health and safety pages.

A brief summary of arrangements for managing health and safety is given below:

## **10.2 Local Arrangements within the School**

Local arrangements have been implemented in the school covering:

- Employee health and safety competence and capability.
- Failure to comply with health and safety requirements through performance management and disciplinary processes.
- Fire and emergency evacuation (including fire risk assessment).
- First aid.
- Communication and consultation of health and safety.
- Reporting of health and safety incidents, hazards and concerns.
- Requirements to carry out risk assessments including for Stress, VDU's, Violence, Lone working, Manual handling, Educational visits, One off events and projects, Curriculum activities and any other areas / activities where it has been identified that there are significant risks.
- Managing the risks to Young People on Work Experience Placements and risks to Pregnant Workers.
- Control of asbestos (including asbestos management plan) and legionella.
- Working at height.
- Statutory inspection and maintenance of work equipment, plant and service.
- Control of (health and safety vetting and monitoring) contractors.
- Monitoring compliance with and reviewing effectiveness of health and safety assessments and procedures.

## **10.3 Health and Safety Standards (Status)**

How we do things safely is detailed in the health and safety standards, policies, generic risk assessments and guidance on the Health and Safety pages of the Schools Infolink. It is important that managers and employees follow these, as they are the way the School ensures it is meeting its legal obligations for health and safety. Your contract of employment (Conditions of Service) requires that you co-operate with the School by complying with its standards for health and safety. Failure to do so can result in disciplinary action. It may also expose the School, or individuals within the school to the risk of prosecution.

The School has arranged for employees to be able to access these standards through the following process: Induction, Health and Safety briefings, Health and Safety Memos, etc.

## **10.4 Health and Safety Risk Assessments**

Risk Assessment is a legal requirement. The ECC health and safety standards, generic risk assessments and guidance were prepared following an assessment of the likely risks

in the area to which they relate and in general form the basis of most routine risk assessments. However, as generic assessments they have limitations and it is the responsibility of the Headteacher/Head of School and all managers to ensure assessments are modified and extended to take account of local circumstances, or separate risk assessments produced for activities where one does not exist if there is a significant risk.

For all managers this includes:

- Ensuring controls detailed in standards and generic risk assessments are implemented in their area of control;
- Ensuring specific risk assessments are undertaken (e.g.: VDU, Stress, Manual Handling, curriculum activities) in their area of control;
- Undertaking risk assessments relating to hazards to which directly managed staff are exposed (this will include stress risk assessments).
- Ensuring risk assessments are carried out as part of the planning of new projects or initiatives that may have health and safety implications.

## 11 Health and Safety Competence and Capability

Competence is the ability to do the job required to the necessary standard. It is not just training, but also experience of applying the skills and knowledge, which needs to be gained under adequate supervision.

The School considers health and safety competence requirements as an integral part of:

- Recruitment and Selection
- Employees changing role
- Induction
- Temporary employees, agency workers and volunteers
- Performance management
- Procedures when employees fail to perform on health and safety.

**Performance management:** The School follows a nationally set performance management review system that is focused on improving teacher practice and pupil achievement. Health and safety is considered as part of the performance management process and where appropriate health and safety objectives are included.

In respect of the Headteacher/Head of School, account is taken of the results of health and safety monitoring, Ofsted reports and self-evaluation forms (SEFs). Where these show areas that need development, health and safety is included as a specific objective under Leadership.

Reference should be made to Headteacher/Head of School, manager and employee responsibilities in this policy document.

For non-academic staff health & safety is considered as part of the performance management process.

**Training (legal requirement):** There is a legal requirement to take account of an employees health and safety capabilities when giving them tasks. More specifically there is a requirement to provide employees with adequate health and safety training on recruitment and on being exposed to new risks (for instance due to a change of job role).

The School ensures that employees are given access to training and development appropriate to their role and risks they are exposed to.

Training and development can be delivered in a variety of ways. In some cases formal training will be needed. In other cases it can be achieved through coaching by another member of staff or reading relevant health and safety standards.

The Schools keeps a record of Health & Safety training undertaken by employees.

EES for Schools: [EEStraining@EESforschools.org](mailto:EEStraining@EESforschools.org) / 0333 013 9834

## **12 Communication**

It is recognised that good communication systems are essential to ensure that everyone knows:

- about the health and safety arrangements within the Schools;
- about the risks associated with their work;
- what they need to do to protect themselves and others from harm; and
- how they can contribute to a safe school, by raising health and safety concerns.

The School ensures that health & safety information is communicated through the following ways: induction, newsletters, staff meetings, memos, etc

## **13 Health and Safety Consultation**

Employees need to be involved in health and safety decisions that affect them and the risk assessment process. Consultation involves not only giving information to employees, but also listening to them and taking account of what employees say before making any health and safety decisions. The law requires that employees must be consulted before implementing changes that may affect their health and safety and with regard to risk assessments that cover their work activities.

Consultation within the School takes place through the following methods:

- In the first instance all employees can raise health & safety concerns directly with their line manager.
- All employees also have the right to raise health & safety concerns with a trade union appointed health & safety representative, who can take the matter up on their behalf.
- Ensuring health & safety is on the agenda at team meetings. Issues are then dealt with or referred up.
- The School has set up a Health, Safety & Wellbeing Committee. This includes employees.

Trade Union Safety Representatives are employees, appointed by the trade union they belong to, to represent employees on health and safety. They can assist any employee who has a health and safety concern (not just those belonging to their Union). If the school has a union appointed safety representative, their details should be brought to the attention of employees by their inclusion in the Health and Safety arrangements notice. If the School does not have any TU appointed Safety Representatives they can appoint 'representatives of employee safety' or consult with all staff directly.

## 14 Health and Safety Monitoring and Auditing

The School has established the following systems to discharge its responsibility for health and safety monitoring in the establishment.

- **Audits:** The School will ensure that a health & safety audit of the establishment is carried out at regular intervals by ECC Corporate Health & Safety.
- **Internal Monitoring:** The School ensures that the online health and safety electronic internal monitoring checklists available annually through the Health & Safety pages of the Schools infolink are completed. The submission of these automatically generates actions plans which are reported to the Governing Body.
- **Health and Safety Incident Investigation:** The School has an internal system for reporting incidents. The incident numbers and details are reviewed by the Schools Senior Management. A summary report is also presented to the Governing Body at least termly. Serious incidents are reviewed by a senior member of staff and the findings reported to the Governing Body. The School also uses the online reporting system available through the Health & Safety pages of the Schools Infolink.
- **Other Monitoring:** There are systems in place within the school which ensure that the following monitoring is also carried out:
  - Termly inspections of the premises (all curriculum / work areas and general areas).
  - Monitoring of contractor operations under the School's control.
  - Routine checks on equipment and electrical, gas, mechanical and other services.
  - Hazard reporting system which is reviewed at least termly by Senior Managers to assess the types of issues being identified and whether they are being dealt with effectively.

## 15 Health and Safety Performance Reporting and Review

The Board of Directors and CEO review the health and safety performance of the MAT Academies annually. This takes the form of a health and safety performance report produced by the Operational Director or Headteacher/Head of School, which is presented to the Board of Directors for review:

- School health and safety inspections, monitoring checks and incident investigations.
- Health and safety investigations and inspections carried out by enforcing bodies (e.g. HSE, Fire and Rescue Service, Environmental Health).
- Any surveys carried out by the school, which provides data that relates to employee health, safety and wellbeing (e.g. Outcomes from the Education Support Partnership programme).



## **16 Consequences of Non Compliance with the Schools Health and Safety Policies and Standards**

It is a requirement for all employees to fulfil their responsibilities as outlined in this policy. Where there is a failure to comply with the Policy, whether observed in routine activities or through established health & safety monitoring systems, an appropriate response is required to hold managers and employees to account and remedy the failure. A number of options are available depending on the severity of the circumstances:

- As part of the normal line management process
- Through performance reviews
- For serious breaches, through disciplinary action. If sufficiently serious, this could include dismissal for gross misconduct.

The Schools HR policies give full details on disciplinary and misconduct procedures.

## **17 Review and Revision**

The Governing Body will ensure that this Health, Safety and Wellbeing Policy is reviewed annually and revised as necessary in the light of changes in circumstances and/or legislative requirements.

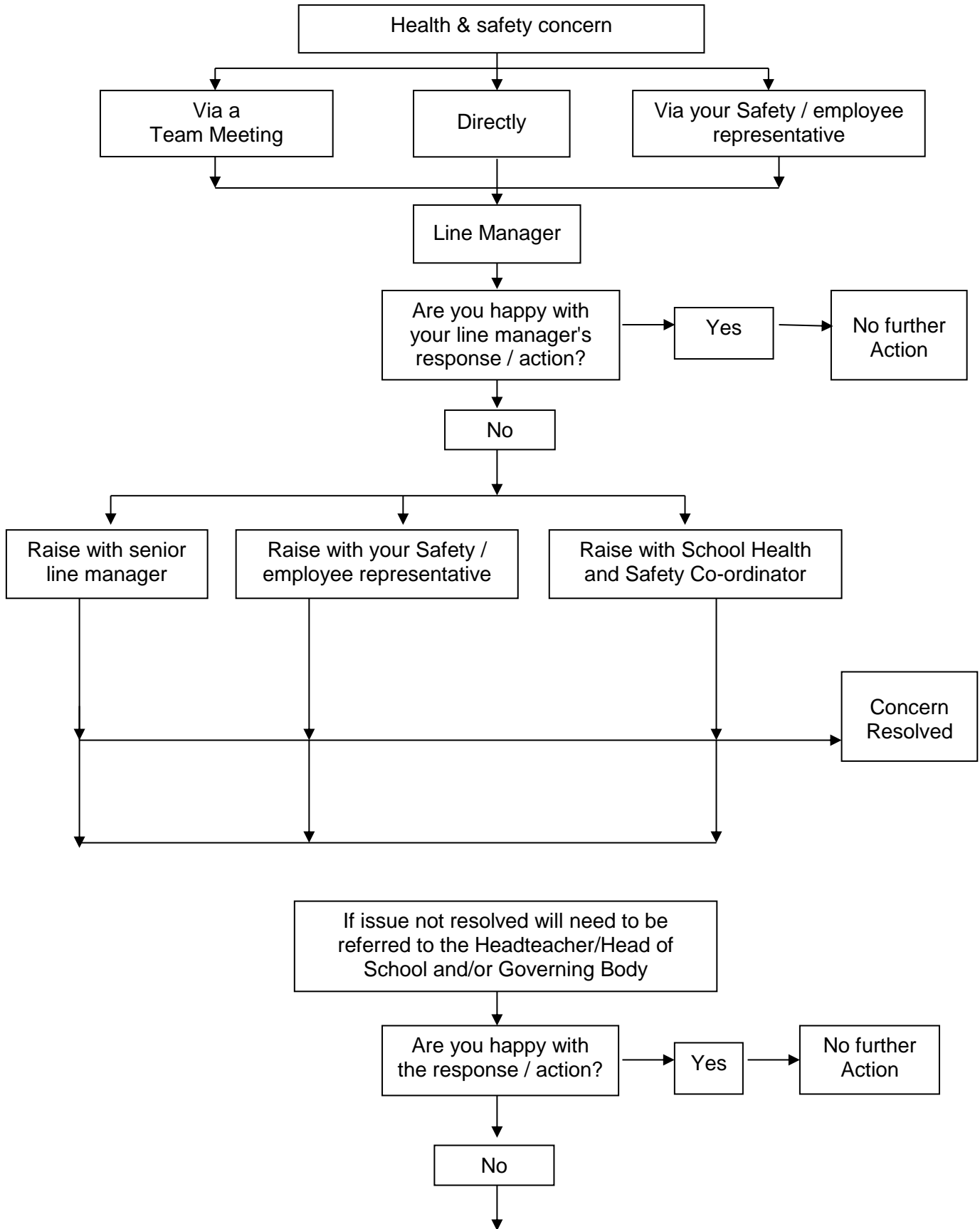
## Appendix 1: Health and Safety Local Academy Arrangements Notice

<b>Academy:</b>	
<b>Headteacher/Head of School:</b>	
<b>Director responsible for Health &amp; Safety:</b>	Simon Gibbs
<b>Operational Director</b>	Steve Taylor
<b>School Health and Safety Coordinator:</b>	
<b>Educational visits co-ordinator:</b>	
<b>TU Health and Safety Representative / Employee Representative:</b>	
<b>Report health and safety accidents / incidents to:</b>	
<b>Report hazards to:</b>	
<b>Person(s) responsible for undertaking H&amp;S inspections:</b>	
<b>Person responsible for co-ordinating fire evacuation arrangements:</b>	
<b>Fire marshals:</b>	
<b>Fire assembly point(s):</b>	
<b>Day and time of weekly fire alarm tests</b>	
<b>First aiders / appointed persons:</b>	
<b>Where to find:</b>	<b>Location:</b>
Accident / Incident report forms	
Hazard book	
Health and Safety Standards and Information relevant to school / curriculum area	The School subscribes to ECC Corporate H&S. Standards and guidance which are on the health & safety pages of the Schools Infolink.
Members of staff who have health and safety access on the Schools Infolink.	

## Appendix 2: Getting help on health and safety

ECC Contacts	Name(s)	Contact No. / email
ECC Corporate Health & Safety Team	H&S Support Desk	Tel: 0333 013 9818 <a href="mailto:hs@essex.gov.uk">hs@essex.gov.uk</a>
School Meals	School Meals Helpline:	Tel: 01245 356218 E-mail: <a href="mailto:school.meals@essex.gov.uk">school.meals@essex.gov.uk</a>
Asbestos / legionella / contractor management advice	Refer to property handbook	
County Educational Visits Adviser	Educational Visits Team	Tel: 01245 221022 <a href="mailto:educational.visits@eesforschools.org">educational.visits@eesforschools.org</a>
ECC Counselling Service (Confidential service)	Occupational Health Centre	Tel: 0333 013 3267 E-mail: <a href="mailto:counselling@essex.gov.uk">counselling@essex.gov.uk</a>
EES for School	Training	<a href="mailto:enquiries@EESforschools.org">enquiries@EESforschools.org</a>
Critical Incidents (support and guidance for dealing with critical incident)	Schools Communications	Tel: 01245 434745 E-mail: <a href="mailto:schools.communication@essex.gov.uk">schools.communication@essex.gov.uk</a>
<b>Other contacts</b>		
School's Property Consultant		
School's food safety advisor		
Occupational health advice		
School nurse		
Essex Health Protection Team (Infection control advice):	0345 155 0069 <a href="mailto:essexhpt@phe.gov.uk">essexhpt@phe.gov.uk</a>	

### Appendix 3: How to raise a health & safety concern



**Appendix 4 –  
INSPECTION AND TESTING SCHEDULE**

The table below sets out the issues to inspect, the inspection frequency and the person responsible for checking each issue.

Issue to inspect	Frequency	Person responsible
Air conditioning systems and duct hygiene	<p>Both are inspected once every 6 months (the air conditioning system must be inspected by an energy assessor at least once every 5 years).</p> <p>There is also an annual certificated inspection to ensure there is no leakage of refrigerant.</p> <p>All maintenance and certification is conducted by a qualified energy assessor.</p>	<p><b>Operational Director with The Finance Team</b></p>
Asbestos register	<p>A risk assessment takes place annually and when any changes to the building take place.</p> <p>The asbestos register and asbestos management plan are updated accordingly.</p>	<p><b>Operational Director with the Site Manager</b></p>
Electrical testing and inspection	<p>A <a href="#">PAT</a> exercise takes place annually.</p> <p>The schematic of the supply route and primary distribution is updated annually.</p> <p>Fixed wiring and all distribution boards and safety devices are inspected annually. All fixed wiring and all distribution boards are tested at least once every 5 years.</p> <p>Testing of all distribution boards in mobile accommodation is conducted on an annual basis.</p>	<p><b>Operation Director with The Finance Team</b></p>

	All electrical testing and inspection is carried out by a competent person.	
Extraction systems	Dust extraction equipment is tested and inspected on an annual basis. Local exhaust ventilation is inspected every 14 months. For extraction equipment in catering facilities, grease filters are removed and cleaned at least each term, and ductwork is also cleaned at least each term.	<b>Operation Director with The Finance Team</b>
Fire safety	Our fire risk assessment is reviewed and updated by a competent person on an annual basis, and when any changes are made that might impact fire safety. Fire detection and alarm systems are tested weekly. All call points are tested over a 13-week cycle. Formal quarterly and annual inspections are completed by a competent person. Fire doors are inspected weekly by a competent person. Fire extinguishers are inspected and maintained on an annual basis by a competent person. The fire sprinkler system is inspected and tested annually (with additional checks completed as needed to meet insurance requirements). Fire blankets are inspected annually and replaced as required. Hose reels are inspected on an annual basis by a competent person. Facilities for the fire service, including dry risers, access for	<b>Operation Director with The Finance Team and Site Manager.</b>

	<p>emergency vehicles, and emergency switches for installations, are maintained and tested annually.</p> <p>Lightning conductors are inspected and electrically tested on an annual basis by a competent person.</p>	
First aid equipment	<p>First aid equipment is inspected every term. Any equipment which has passed its expiry date is replaced.</p>	<b>Operation Director with First Aid Lead</b>
Fuel oil storage	<p>The plan of primary pipework and main isolation points is updated annually.</p> <p>All tanks, bunds and pipework are checked on a weekly basis.</p> <p>A detailed inspection and service is carried out by qualified inspectors on an annual basis.</p>	<b>Operation Director with The Finance Team</b>
Gas safety	<p>Gas safety inspections are completed and certificates obtained as required by law (including annual test certificates for boilers). Gas appliances are identified and their location recorded on an annual basis.</p> <p>All gas appliances are serviced annually.</p> <p>A visual condition inspection (and testing if required) is conducted on gas pipework on an annual basis.</p> <p>All work is carried out by a Gas Safe Registered engineer with a valid certificate of competence relevant to the particular type of gas work involved.</p>	<b>Operation Director with The Finance Team</b>

Glazing	An initial survey has been made of the building to identify any areas where safety glazing should be implemented. Further checks that any replacements are with safety glass are made as needed.	<b>Operation Director with The Finance Team</b>
Lifts and hoists	Passenger lifts receive a thorough examination, full maintenance and inspection by a competent person at least once every 6 months, and goods lifts at least every 12 months. All lifts are also tested and inspected after any significant changes have been made.	<b>Operation Director with The Finance Team</b>
Lighting systems	Electrical stage lighting is inspected and tested annually by a competent person. Portable dimmer racks with no fixed cabling, plugs, sockets and flexible leads are inspected every 3 months and following every alteration. Emergency lighting systems are inspected and tested on a monthly basis by the premises manager. There is a 1 hour duration test once every 6 months, which includes a 3 hour battery test by a competent person. A full duration test takes place annually.	<b>Operation Director with The Finance Team</b>
Mobile accommodation	A structural inspection of any mobile accommodation is conducted on an annual basis.	<b>Operation Director with The Finance Team</b>
Playground and gymnasium equipment (fixed)	Fixed playground and gymnasium equipment is inspected and tested annually.	<b>Operation Director with The Finance Team</b>



<p>Water hygiene and safety</p>	<p>For cold water systems, the plan of primary pipework and main isolation points is updated annually. A visual condition and compliance inspection is undertaken on an annual basis, as is a tank condition and compliance inspection. For hot water systems, a visual condition inspection is conducted on an annual basis. Maintenance checks are also carried out on all pipework devices annually. Water quality checks, and water and surface temperature checks, are completed at a frequency to be determined by our water safety risk assessment. These checks include identifying, assessing and monitoring sources of risk of legionella bacteria.</p>	<p><b>Operation Director with The Finance Team and Site Manager.</b></p>
<p>Workstation assessments</p>	<p>Staff workstations are analysed to assess any health and safety risks whenever a new staff member is appointed, and also whenever a staff member is relocated to a different area or significant changes are made.</p>	<p><b>Operation Director</b></p>
<p>Working at height</p>	<p>Equipment used for working at height is inspected and tested on an annual basis.</p>	<p><b>Operation Director with the Site Manager.</b></p>